

# Do-It-Yourself Bat Costume

## Instructions

- 1 Measure the sleeves and length of the t-shirt as shown in fig. A. (Drawing not to scale.)
- 2 Cut the a felt wing according to these dimensions in the shape shown in fig. B. Repeat for the other wing.
- 3 With one wing, measure 1" from the corner to the tips of the wings as shown in fig. C. Cut the boning and 1" wide felt strips according to these lengths. You should have four strips of boning and four strips of felt.
- 4 On the back of a wing, pin a boning strip with a felt strip on top along one diagonal section of the wing, starting 1" from the corner and ending at the tip. Sew in place along either side of the strip. (Be sure that your bobbin thread matches the felt color. Repeat for the other bend in this wing and then repeat again, sewing two boning and felt strips to the other wing. See fig. D.
- 5 Next, pin one wing along the side and sleeve seams of the t-shirt. Sew with a 1/8" seam allowance. See fig. E. Repeat for the other wing.
- 6 Finally, print the mask file on card stock, cut around and cut out the eye holes. Attach to a pair of child's sunglasses with tape.

### SUPPLIES

long-sleeved t-shirt  
1 yard wool felt  
1 yard 1/4" boning  
cotton thread  
scissors  
sewing machine  
child's sunglasses  
tape

Fig. A

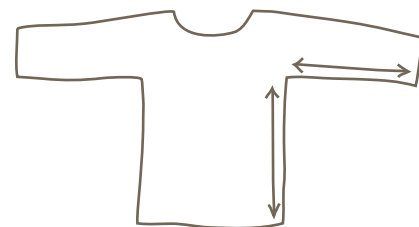


Fig. B

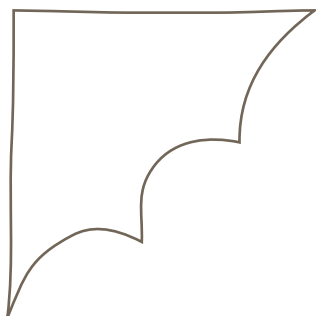


Fig. C

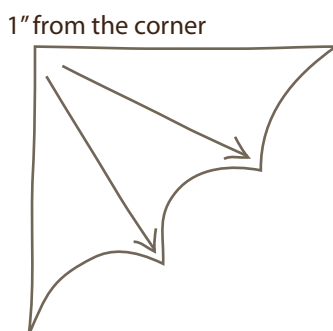


Fig. D

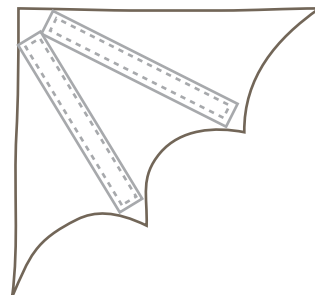


Fig. E

